



Bonham Road, London, SW2

1 bedroom flat to let

£400 Per Week

Furnished

Property Details

A wonderful, spacious one double bedroom top floor Victorian conversion flat, located in a sought after residential pocket in Brixton. The flat comes complete with large reception room which has plenty of space for a dining area, off the reception room is a modern kitchen fitted with all mod cons. There is also a spacious double bedroom and a sleek modern family size bathroom. Bonham Road is just a short walk from all the amenities Brixton has to offer including high street stores, pubs, bars and restaurants.

Features

- Victorian conversion
- Bright and airy throughout
- Sought after location
- Close to transport links

Council tax band D EPC rating D (57)



Bonham Road, London, SW2



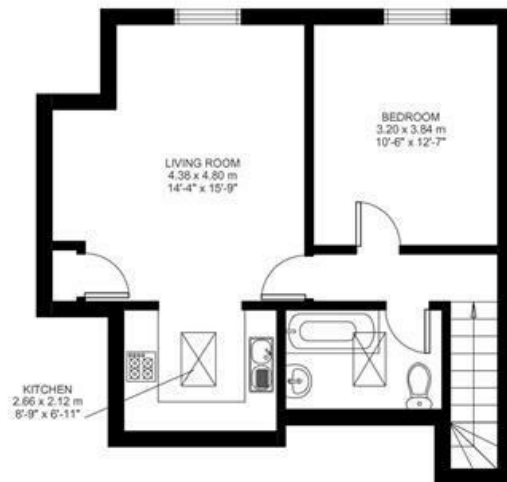
1 Bed flat

Approx internal area:

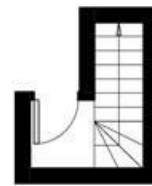
571 sqft 53 sqm

While we do try our very best, floor plans are produced as a guide only and we take no responsibility for the precise accuracy with which any property is represented

Bonham Road



Third Floor



Second Floor



Bonham Road, London, SW2

